

BRIDE VALLEY NEWS



May 2025

Bride Valley News – the magazine of the Bride Valley Communities and the Bride Valley & Chesil Churches

Contents

From the Rectory	4	Shipton Gorge	26
Valley Notes	6	Litton Cheney	31
Long Bredy	14	Puncknowle, Swyre & West Bexington	36
Burton Bradstock	16	St James the Least	39
Littlebredy	25	Services in the Valley	60

June 2025 issue deadlines: Articles, photographs, etc must be sent to the appropriate Village Correspondent (contact details at the head of each village section) by 9th May for the June issue. Contributions from outside the Bride Valley should be emailed to bvnburton@gmail.com. Handwritten or typed copy should be delivered to village correspondents well before the deadline. Please contact bvctc@outlook.com for information on advertising in the BVN. Articles, notices and advertisements in this magazine may not necessarily represent or reflect the views of the Editor or the people and organisations funding and supporting the BVN. Copies of the BVN, in colour, can be found at bvn.org.uk or via links on the Bride Valley village websites.

Note: Contributors are asked to note that space in the BVN is strictly limited and the Editor reserves the right to edit or refuse submissions and cannot guarantee that items will be included.

The cover picture is a drawing by Hilary Mousley, who died on 18th March. Hilary was a founder member of Burton Bradstock’s Village Society and has been a valued part of the village, the Bride valley and Bridport over many years.

The Bride Valley News is delivered to every home in the valley and is entirely produced and distributed by volunteers. Donations to help us continue to provide the magazine would be welcome and if you feel able to contribute - please make a BACS payment to:
Account: ‘Bride Valley Churches Team Council’, Sort code 30-91-21
Account number 00074071.....and please quote BVN.

The Bride Valley & Chesil Churches

St Mary The Virgin: Burton Bradstock
St Mary: Litton Cheney
St Michael & All Angels: Littlebredy
St Peter: Long Bredy
Chilcombe (dedication unknown)
St Mary The Blessed Virgin: Puncknowle
St Martin: Shipton Gorge
Holy Trinity: Swyre

Rector: Rev'd Andrew Rawding (01308) 898799 Associate
Priest: Rev'd Margaret Preuss Higham (01305) 873978

To enquire about Baptisms, Marriages or Funeral arrangements in the Bride Valley Churches of Burton Bradstock, Chilcombe, Litton Cheney, Littlebredy, Long Bredy, Shipton Gorge, Puncknowle or Swyre please contact Rev'd Rawding by phone (see above) or email rectorbridevalleychesil@gmail.com

You can also use www.acny.com for Baptism and Marriage enquiries. Contact Rev'd Margaret Preuss Higham by phone (see above) or email revmph@gmail.com for enquiries in the Chesil Churches of Abbotsbury, Portesham or Langton Herring.

Lay Pastoral Assistants

We have 3 Lay Pastoral Assistants in our team and they are available for anyone throughout our community and can respond to any need, great or small, for pastoral care. Contact Jenny: 01308 898768, Liz: 01308 897451 or Cathryn: 0130 8897169 - or you can get in touch with your churchwarden or Helen Fry, Benefice Administrator on 01308 897260. Home communion is available by arrangement. If you would like to become an LPA, please have a look at the Diocese of Salisbury webpage: <https://www.salisbury.anglican.org/whoweare/news/is-god-calling-you-to-be-a-lay-pastoral-assistant->, and then chat with Rector Andrew.

From the Rectory

Did you know that we live in the land of ‘Jurassic Saints and Sailors’? Oh, and ‘Soldiers, Smugglers and Slave Traders’ too? Here’s a pub quiz question: How many Saints are linked to churches in the Bride Valley? Answer: Six (Saint Mary, Saint Martin, Saint Peter, Saint Michael & All Angels, Saint Luke, and Saint Giles). If we add the ‘Chesil’ churches it’s another three (Saint Bartholomew, Saint Catherine, and Saint Nicholas). There may be more, but if we also consider that the Bride Valley is linked to St Brigid or ‘Brid’ then across the Bride Valley and Chesil churches we are linked to ten saints. I’ll leave you to work out who the sailors are, and where soldiers, smugglers and slave traders all fit in.

As the Rector I was given responsibility for the ‘cure of souls’ of an area which extends from the East Cliff of West Bay to Gore Cove of West Fleet, in my mind the land of ‘Jurassic Saints and Sailors.’ After three days at a mandatory ‘New Post Induction Course’ run by the Church of England this emerged as my vision for my new role, ministering across twelve churches, each of them like a ‘lighthouse’, in ten different parishes and village communities, each of them like a ‘harbour’, in the ‘cathedral’ of this area of ‘outstanding natural beauty’, that we call home. When I consider the ‘cure of souls’, I consider the health and well-being of all the people of the area, not just spiritually, but physically and emotionally/psychologically too, so that all souls can and will rest in peace. The Holy Trinity (Swyre) of well-being; living and journeying as pilgrims in tune with the joy of creation (God the Father), in tune with love (God the Son) and on paths of peace (God the Holy Spirit). A top priority going forward will be to ensure the preservation of these twelve ‘lighthouses’ as beacons of historic, cultural, social and spiritual significance. This will need the support of all our village communities.

Another priority, for those of us involved in the life of the churches, will be to continue to provide non-judgmental, unconditional love and acceptance to people of all ages and backgrounds in our communities, providing harbours of hope, for people to find safety and security from physical and mental isolation and loneliness, within communities of hope. A song from Burton Bradstock School comes to mind: “We are the lights in times of darkness, we are the lights, and we are love.”

This could all involve doing and being church differently, in more accessible and user-friendly buildings, like the community halls in Litton Cheney and

Portesham, and at times on a Sunday or during the week that are more compatible with busy family lives. My intention is to also reach tourists and travellers in this land of 'Jurassic Saints and Sailors' with pubs, restaurants, and guest houses being linked in with pilgrimage trails. This is all 'Ascension Day' thinking, that is looking up and out, and praying with courage: 'What now Spirit of truth and love, life giving holy dove?'

Which reminds me, everyone is welcome to join us at the source of the River Bride, Littlebredy, at 11.00am on Thursday 29th May (Ascension Day) for a service of blessing for ourselves and everyone in the Bride Valley, in communion with St Brigid and the mysterious 'river of life'.

Andrew

Church Floodlighting

If you would like to have a church floodlit for a baptism or wedding, or in memory of someone, please speak to the following: Burton Bradstock: Ian Ibbotson 898484, Shipton Gorge: Phyl Webster 898657, Litton Cheney: Freddie Spicer 482617.

Safeguarding

The Churches of this Benefice have adopted the House of Bishops safeguarding policy and are 'Promoting Safer Churches'. The Benefice Churches have an open door to all survivors.

For further information or support please contact our Safeguarding Officer:- Les Keatley. Tel:- 07833545450 email:- Les@Keatley.me.uk

From the Registers

Derek Heaver: Burial of Ashes Friday 11th April at Puncknowle

Rosemary Earnshaw: Burial of Ashes 22nd April at Shipton Gorge

BRIDE VALLEY CAR SERVICE

The BVCS is a volunteer scheme offering residents of the Bride Valley transport to and from medical appointments when they are unable to drive themselves or be driven by relatives or friends.

Clients are charged a mileage fee (currently 50p per mile) plus a standard charge (currently £2.00 per journey).

Because the service depends on the availability of volunteer drivers, clients are asked to give as much notice as possible – we are unlikely to be able to respond to requests within 48 hours of an appointment.

To book a journey please call our
voluntary co-ordinator on
07393 607025

We always welcome new drivers.



Thorners CE VA School

Easter

The children have been off for two weeks in the lead up to Easter but staff, parents and volunteers have been in working hard to ready things for the summer term. Thanks to our Pre-school staff and helpers for a complete revamp of the inside space for the little ones - along with a new marquee up outside to provide some welcome shade in the sunny weather that we hope continues in the months ahead!

Huge thanks to Luke Heywood and his team for all their work across the holidays in getting the new paths in our wildlife Discovery Area completed and also the installation of wheelchair friendly matting to provide access all year round. With these works and the new PE shed up in time for the summer - we will be able to make the most of our outside space this term.

We return to school on the 22nd April and we will welcome the children back with our usual church service and hot cross buns in LATCH afterwards.

Summer Fete

As you may have heard, the Thorner's, Litton Cheney Summer Fete will be held at school and in LATCH on Saturday 7th June from 1.00pm-4.00pm.

There will be the usual mixture of summer fete activities ranging from Welly-Wanging, Beat the Goalie, BBQ and Cream Teas, Forest School Activities, Crazy Golf, Plants and Produce, Maypole Dancing, Bottle Tombola, Soak-the-Sitch, Dog Show, Raffle with £100 first prize and lots more! The event will be cash only and will take place in both LATCH and school grounds.

Happy Easter!

Mike Sitch
Headmaster



Burton Bradstock CE Primary School

'Do justice; love kindness; and walk humbly with God'
(Micah 6:8)

We are inspired by this verse from the bible and how it shapes all we do. We all believe that fairness, kindness and being humble are the key to flourishing for all. The links between this and our school values of Happiness, Friendship, Hope, Love, Courage and Respect are clear.

In the run up to Easter this year, we have been observing lent in school in our RE lessons across the school on the theme of Salvation. In collective worship, we have been looking at the values of Love and Hope and how these have been shown in the Easter story. Finally, in the last week of term, all classes visited St. Mary's church for Experience Easter which was kindly set up by members of our Chaplaincy group using resources made by the children in our beach team day. The children also took part in an Easter garden competition in aid of Weldmar Hospicecare - well done to our winners Georgia, Ethan and Chloe and all those who entered!

Owl class had a great visit to Higher Sturthill Farm before the Easter break. They learnt all





about dairy farming as part of their topic 'Sow, grow, farm'. A huge thank you to the Fry family for enabling us to visit.

Hopefully you have seen our elephant 'Burt' who is at the Hive Cafe as part of the 'Stampede by the sea' art trail. Kingfisher class really enjoyed their visit at the end of term, especially

the ice creams - thank you to all at the Hive Beach Cafe for their ongoing support for our school.

We have spaces available in our Pre-School from September for children who will turn four that academic year. If you would like to visit our happy and friendly village school, please contact the school office to arrange a tour: 01308 897369



or office@burtonbradstockprimary.org

To stay up-to-date with all our news and events please follow our Facebook page: <https://www.facebook.com/BurtonBradstockPrimarySchool> or the hashtags #LoveWhereWeLearn #TeamBurton!

Adam Gough
Headteacher

Our Night Sky in May 2025

Jupiter will be setting in the west at about 2200 followed by Mars at about 0100. Saturn and Venus will be rising in the east about 0400 but will be soon lost in the dawn sky.



NASA's CADRE (Cooperative Autonomous Distributed Robotic Exploration) technology demonstration is sending a trio of rovers the size of a carry-on bag to the Moon. The project is designed to show that multiple robots can cooperate and explore together autonomously.

Their aim is to land close to a crater that is in constant darkness, but whose rim is in sunlight so that the robots' solar arrays can recharge the robots. It is hoped that the robots will be able to descend into the crater to see if water ice has gathered there over billions of years, delivered by passing comets.

I have written about the need to find water to sustain future human exploration, providing future astronauts with oxygen and hydrogen fuel, as well as drinking water.

I hope to keep you informed about how successful they have been.

Bill Turnill

Bride Valley WI

The Bride Valley WI are celebrating a victory this month. The skittles team are proud to share that they won the Skittles Final against Wool WI and have been crowned the winners of the Dorset Federation WI Skittles League. They now have a shiny cup to display for a year before they must defend their title next spring.



A massive well done to all the players who took part in this year's league matches, and to Phyllis for stepping in as Captain following Charlotte's little mishap.

Our monthly meeting welcomed Keith Hayman who gave an extremely interesting presentation about the charity 'Medical Detection Dogs'. He gave an overview of how the charity started and told us about the work the dogs carry out. They are able to detect cancers, Parkinson's and bacterial infections. They also work with Medical Assistance Dogs who support people

with complex health conditions. These dogs are truly amazing and have transformed many people's daily lives. It is a small charity but does fantastic work, it was an interesting and informative evening.

Our Sunday morning walk was on Mother's Day when the weather was kind to us. Our walkers included a Mum with her two daughters and a member celebrating her birthday. After a rendition of 'happy birthday' we set off from The White Horse in Litton Cheney to complete the Seven Benches walk. We reached the first bench, Queens Bench and then uphill to bench two and then three, aptly named Rest and Wait Awhile. We did and took in the glorious views. Our walk took us right to the A35 where after a hilly section we stopped for a quick drink. We then headed back down enjoying views of Litton and passed close by the vineyard. We reached bench 6 near the Snicket then continued to School Lane and our final destination, bench 7, where we could view the Church. A good morning's effort with wonderful views. We highly recommend this walk.

If you are interested in joining us, we meet every third Thursday at Puncknowle Village Hall at 7:30. Contact us at bridevalleywi@gmail.com.

The Bride Valley Book Club Review

Demon Copperhead by Barbara Kingsolver

Kingsolver is one of our favourite authors and we agreed that in "Demon Copperhead" she has excelled herself. This is a re-imagined modern day telling of David Copperfield, probably Dickens' most autobiographical novel. Kingsolver lives in the Appalachian Mountains and she has set her story here in one of the poorest and most disenfranchised parts of South West Virginia where poverty rates are more than twice the national average.

Damon Fields is born in a trailer to a vulnerable young drug addict mother, his father already dead in a drowning accident. He is of Melungeon descent - indigenous to Appalachia with deep red hair, green eyes and dark skin. His mother dies from an overdose and after suffering abuse from a hostile step-father he ends up in the foster care system. From here on it becomes easy to spot the parallels with Dickens's characters. Kingsolver is passionate about social justice and her narrative shows Damon (or Demon Copperhead - as he becomes known) being exploited by a wholly inadequate system of manipulative foster carers and social workers. Demon navigates his way through the horrors of unpaid tobacco cropping, waste recycling sorting (crystal meth lab adjacent) and acting as a pawn shop negotiator before

eventually escaping to track down his grandmother who takes him in and shows him kindness. Demon moves away to lodge with a football coach and fulfil his talent as a junior “linebacker”. This brief period of happiness is soon to be marred by a devastating injury. The opioid Oxycontin crisis affecting America’s poor is a constant background canvas in this story and now Demon succumbs to this himself. After a number of tragedies his survival instincts kick in and he embarks on his longed for journey - to the ocean. We agreed that Kingsolver’s ability to inhabit the character of Demon and speak in his sardonic voice was wonderful. This is a tour de force of a novel and thoroughly recommended.

Liz Pinfield

Events in the Bride Valley and nearby

The walled garden in Littlebredy will be open to the public from 2.00pm-5.00pm on Wednesday and Sunday afternoons until September. Everyone is welcome to visit!



Bride Valley Gardening Club

Probably the best talk you'll ever hear

Grovelling apologies to anyone who was misled by my entry in last month's BVN saying that our Fuchsia talk and AGM would be on the 22nd April when in fact it was on the 14th. Our hardworking secretary did her best to notify all members as well as putting up notices around the villages but I suspect there will have been a few people who turned up on the 22nd and were furious. I can only repeat my apologies.

Looking ahead - and the date is correct – the club welcomes members and visitors to the talk on **Monday May 17th** when we are lucky enough to have enticed an internationally renowned speaker, **Timothy Walker** who was *Horti Praefectus* and Director of Oxford Botanical Garden and Harcourt Arboretum. He was elected Fellow of the Linnaean Society and is lecturer in Plant Sciences at Somerville College, Oxford. As an international speaker he has given over 2000 talks in Britain, from Europe to North America and Australia. His talk will be 'What Have Plants Ever Done For Us?'.
“Rarely does a minute go by when we are not involved in an activity that would be impossible without the help of plants”.

This talk looks at market dependence on plants for everything from food to film, from painkillers to paint. It also examines the ways in which our exploitation of plants could keep up with demand from an increasing global population and what we as individuals can do to help future generations.

Irrespective of your interest or knowledge of gardening it will probably be one of the best talks you'll ever hear. Tim's talks are always lively, informal and refreshing with a huge depth of knowledge and is in no way an academic lecture.

This special event is ticketed in advance with tickets available from Liz Gibbs (07751 942588) or email bridevalleygc@gmail.com at £5 for everyone. We meet at the Community Hall, LATCH, in School Lane, Litton Cheney. Doors open at 7.00pm in time for refreshment, plant sales and a raffle. You'll be pleased you came!

Ali Halliday (balletboots@live.com, 01308 482314)

PRINCE OF WALES & PORTESHAM

SURGERIES

New Site Operations Manager

I would like to take this opportunity to introduce myself. My name is Ros Fuller and starting in April I will be taking on the role of Site Operations Manager at Portesham Surgery. Matt Bell will be



leaving for pastures new at the end of May, and I would like to thank him for all his work with the surgery over the last year.

Prior to starting at Portesham Surgery, I was a secondary science teacher for sixteen years, teaching in the UK and Spain. Having previously been a patient of Portesham Surgery myself, I joined the Patient Services Team, over two years ago. I have since worked across both practice branches during the merger, and afterwards as Patient Services Team Leader. I am really looking forward to starting my new role and supporting the wonderful team we have at the surgery and our patient community.

Fundraising for FeNO: We are currently fundraising to purchase a FeNO machine for the practice. FeNO (fractional exhaled nitric oxide) is a test that measure the levels of nitric oxide in your breath and is used to help the more accurate diagnosis of Asthma. We currently borrow a FeNO machine once a month and this is shared across both branches. A FeNO machine costs around £3000 and we are in the process of organising events to help raise the amount we need.



One easy way to raise money is to use the easyfundraising app or website for your everyday online purchases. easyfundraising partners with over 8000 brands who donate a percentage of what you spend to our cause at no extra cost to you! You can join by scanning the QR code or go to one of our Facebook pages for the web link.

Dispensary News: Our amazing team in dispensary do a wonderful job ordering, organising and distributing medications for all our dispensing patients. In order to keep up with training needs and audits they will be closing from 12.00 – 18.00 on the last Thursday in every month. During this time, only acute medications can be dispensed, and we kindly ask that you ensure you organise any routine collections for an alternative time. Thank you.

Surgery website → www.princeofwalessurgery.co.uk On Facebook → Prince of Wales surgery and → Portesham Patient News.

Long Bredy

Village Correspondent: Rebecca Grove
01308 482882 bvn@longbredy.org.uk
Village web-site: www.longbredy.org.uk



Long Bredy 100 Club March Results

£30.00	No. 142	R. Symes
£15.00	No. 02	D. Peretz
£5.00	No. 36	S. Elliott

Coming up in May...

Coffee Break Plant Sale

On **Saturday 10th May**, there will be the annual Plant Sale and Coffee Break in Manor Farmyard from 10.30am until 12.00noon.

We usually have a good range of quality plants including shrubs, perennials, annuals, vegetables and herbs, all at very affordable prices. Any contributions are very welcome; please ensure they are labelled and brought to Sue Dyer at Corner Cottage or Jackie Cain at Manor Farm if possible before Friday 9th May.

It is a very convivial event, particularly if the sun shines! All proceeds will go towards the building work required for the renovation of the church tower. Any unsold plants will go on a gate sale at Corner Cottage in the following week.

Please contact Sue Dyer (01308 482882) for further details.

Come Along Inn

The 'Come Along Inn' will open its doors on Friday 16th May from 5.30pm – 9.00pm at the Village Hall. As always, a warm welcome awaits you. For further details contact aking44634@aol.com or call 01308 482270.

Annual Meeting of the Parish – Long Bredy and Kingston Russell Parish Council

The meeting will take place on **Monday 19th May at 7.00pm** in Long Bredy Village Hall.

The Annual Meeting of the Parish is an opportunity for you to hear what has been happening in the Parish over the last year and what the plans are for the future. You will also be able to meet and discuss issues with your local Parish Councillors and our County Councillor Sally Holland. It's also a chance to catch up with neighbours and other residents, all while enjoying complementary light refreshments. Prior to this will be the Annual Meeting of the Parish Council, starting at 6.30pm. Members of the community are also welcome to attend this meeting should they wish. We are aware that this unfortunately coincides with the Gardening Club and their guest speaker but hope to still see as many members of the parish as possible.

Fast Fibre

Did you know that we now have Fast Fibre Broadband in the village, but many households are being told by their Internet Service Provider (ISP) that it's not possible to connect them. This is not true! It is available to anyone on the 01308 482... exchange. If you are having issues with your ISP connecting you to Fast Fibre then please let us know by emailing krlb@dorset-aptc.gov.uk and we will share with you the contact details of our Fast Fibre expert/resident who will be happy to help you.

Burton Bradstock

Village Correspondent: Pat Grafton
patgrifton43@gmail.com Tel: 01308 898264
Village web-site: www.burtonbradstockvillage.org.



Tots' Time

Tots have been having a nice long break for the Easter holidays - in fact, the whole month of April - so this update will be very retrospective! We have made playdough 'sheep' and 'grass' (though there were some green sheep on white grass) and fixed legs and tails on 'donkeys'. As promised, Tots made a beautiful Easter Garden, which is on display in the church porch in Burton Bradstock - somewhat outclassed by some of the amazing Easter gardens produced by the school-children - but they are older than Tots! Do write your comments in the accompanying book before we remove the garden.



In the summer term we shall be looking at some well-known Old Testament Bible stories, like Joseph and his colourful coat - being thankful for our clothes and practising doing up buttons, etc for the older children. This will be an ideal week for colourful paintings.



Hopefully we shall be outside and able to run around, chase bubbles, march up and down playing musical instruments, and splash around in bowls of water. Can you imagine the fun we shall have in the sunshine? We are so grateful for that large area behind the church.

All pre-school children, toddlers, babies and bumps with their parents/carers are welcome at Tots every Friday in term time from 2.00pm to 3.00ish and Tots' Time is free! For more information please contact Audrey on 897227, Heather on 897780 or Helen on BVchurchesTA@outlook.co.uk

Burton Bradstock Village Hall

Village Hall Bookings

Should you wish to use the Hall at any time, the booking officer can be contacted via email at bbvht.bookings@gmail.com or by phone on 01308897648.

Coffee Mornings

The popular monthly coffee mornings where you can get a sensibly priced coffee/tea and cake plus a chat with friends will be held on the dates below. They run from 10:00 to 12:00 and all are welcome.

Wed 14th May: Bride Valley Drivers

Wed 11th June: Village Society

Burton Bradstock Films

Films takes a summer break and will resume in September. Look for details of the films in the BVN nearer the time.

Burton Bradstock Village Hall Fayre Monday 26th May (2.00pm to 4.30pm)

The Burton Bradstock Village Hall Fayre will be held in the Rectory Gardens and Village Hall on Bank Holiday Monday 26th May starting at 2.00pm. Described by visitors as a traditional English event "Straight out of Midsomer Murders", it's an ideal afternoon out for all local and visiting families. There will be lots of stalls and games providing all the fun and interest you expect at a Fayre.

- The ever-popular Strawberry Jam will be there to entertain the children starting at 2.30pm – don't be late!
- There will be games to test the strength and skill of all comers.
- Tickets for the Grand Draw, the Bottle Tombola and the Spirit Raffle will be on sale.
- Snap up bargains from the Cake, Crafts, White Elephant, Book and Games & Toys stalls.
- Refresh yourself with ice creams, soft drinks, something from the barbeque and our famous Dorset cream teas.

Your support in previous years has made this event a great success with the money raised contributing towards running, maintaining and improving the Village Hall.

In order to make the Fayre a success again we need volunteers to help run the stalls and games. It's fun and only takes just over two and a half hours. If you can help or if you know someone who might please get in touch / ask them to get in touch with Ali Page (07502 434112) or Graham Moody (01308 898548). We also welcome donations for the stalls and Bottle Tombola. If you can help here are the people to contact:

Crafts We will be grateful for any soap, small pieces of china, costume jewellery, scarves, sewn items, embroidery etc. or anything suitable for a gift. Please bring them to the Village Hall on the morning of Saturday 24th May – see below.

Toys and Games Ali Page or Graham Moody – Tel: see above.

We will be grateful for any donations but toys, books, games, soft toys, crayons etc. (new or used) must be clean, in good condition and safe for young children.

White Elephant/ Books, CDs, and DVDs Would people with items to donate to the White Elephant or Book Stall (including CDs & DVDs) please bring them along to the Village Hall on the morning of Saturday 24th May (all items in good condition please). There will also be a box in the Library for the two weeks before the Fayre where you may leave any Books, CDs, and DVDs, but not White Elephant items.

Plants and Produce Please bring any plants or produce to the outside area of the Village Hall on the morning of the Fayre between 10.00am and midday.

Cakes and Preserves Donations may be brought to the Village Hall on the morning of the Fayre and left in the Hall itself (not the Kitchen please).

Bottle Tombola Richard Ferré – Tel: 01308 897648

Please contact Richard with your donations of bottles or cans of alcoholic or soft drinks. Alternatively please bring them to the Village Hall on May 24th – see note below.

Generally A lot of help will be needed to set up and take down on the day. If you are able to come to the Rectory Gardens at 9.30 am to help set up the stalls etc. or at 4.30 pm to help pack them away your help would be gratefully appreciated – please contact Graham Moody on 01308 898548.

Note: The Village Hall will be open from 9.30am to 12noon on Saturday 24th May to receive items for any of the stalls, but particularly the White Elephant, Book and Bottle Tombola stalls.

Church Street will be closed to motor traffic from Donkey Lane to the Village Green from 9.00am until 6.00pm on the day of the Fayre.

Please contact Graham Moody on 01308 898548 or Ali Page on 07502 434112 if you would like to volunteer or if you have any queries.

Burton Bradstock Village Hall “200 Club”

April 2025 Draw

Congratulations to the winners:

1 st	£32.60	No 35:	Mr Derek Harrison
2 nd	£16.30	No 157:	Mr Peter Parsons
3 rd	£8.15	No 100:	Mrs Jan Clark

Anyone wanting to become a member in time for the May 2025 draw should telephone Keith Britton on 01308 898008 and let him have £8 – one pound for each monthly draw in the year. There are double prizes in the December draw.

WDDC Licence no: SL0080

Burton Bradstock Village Society

April Race Night

The committee held its first Race Night in April instead of our usual monthly talk. This was very much a pilot event and those who attended voted it a great success. It was decided that it's something we will be repeating with more races next time.

Village Society Subscriptions:

By now you will have received a request for 2024-25 subscriptions either by email or letter. If not please contact Roger Ashman on 07971 649020 or bbvillagesociety@gmail.com for more information. Thank you to those who have already paid.

Village Outing, Wednesday 14th May

We are looking forward to this year's outing to "The Spirit of the Water Flower Festival" at Salisbury Cathedral, with some time in Salisbury, followed by a visit to the North Dorset Railway Museum at Shillingstone Station. As the tickets for the Festival had to be pre-booked we are unlikely to be able to accommodate requests for late applications but to be sure check with Richard Ferre either by email rwferre99@gmail.com with your details or call Richard on 01308 897648 as there may be cancellations.

The Village Society AGM, Friday May 16th, 7.00pm

Doors open at 6:45pm in the Village Hall. There will be a free glass of wine, light refreshments and Bingo with prizes as entertainment for attendees after the main business. If you would like to become a member of the Society or join our friendly active committee please phone the Secretary, Roger Ashman on 07971 649020 or you can put your name forward on the night.

Annual Plant and Cake sale May 17th, 10.00am-12noon

This will be held in the Rectory Gardens for the sale of a wide range of plants and cakes at bargain prices. After which, please come over to the Hall for drinks, cake, raffle and good company in the Hall. This is always a lovely event with great atmosphere and as with all Society events everyone is welcome.

The Annual Flower & Produce Show Saturday 12th July

It doesn't matter if you are a cook, grower, flower arranger, artist, photographer, crafter or limerick writer this show is for everyone in the Village and all children attending the school. The schedule is now on the website www.burtonbradstockvillage.org/villagesociety under Flower and Produce show. Hard copies will be available in the library and Post Office at the end of the month. A great village event where we all have an equal chance to win and it is just fun taking part.

Burton Bradstock Parish Council

The Annual Parish Meeting will be held on Thursday 22nd May at the Village Hall starting at 6.30pm. Local organisations will be attending to let you all know what they have been doing over the past year. The meeting is also an opportunity for electors to have a say on anything they consider to be of importance to the people of the Parish. The meeting will be followed by light refreshments.

At the last meeting it was agreed that we would relocate and update the existing basketball facility in the playing field. This will be a much-welcomed activity for the older children of the village to enjoy.

Burton Bradstock Festival of Music and Art Spring Concert

Friday 6th June 2025 in Burton
Bradstock Village Hall at 7.00pm

With thoughts on fine warm spring weather at the time of writing, it's a reminder that the Spring Concert—the prelude of the Burton Bradstock Festival of Music and Art's 43rd season—will soon be taking place. It also is a reminder of the power of spring to inspire composers from Schumann's 1841 Symphony 1 'Spring' to the 1930's musical song 'April in Paris'.

This year's concertgoers can look forward to being inspired by June's Concert programme:

W A Mozart *Sonata for violin and piano in F major K.377*

J S Bach *Sonata No. 1 for violin solo, BWV 1001*

Igor Stravinsky *Suite Italienne* followed by selections by Ravel, Debussy and Kreisler, to be played by the Music Director, David Juritz, on violin, with Nadine Andre on piano.

By the time you read this, tickets will be on sale at £14 each at the Bridport Tourist Information Centre 01308 424901 or online at <https://bridportandwestbay.co.uk/tickets/> Preparations are now well underway for the main Festival, (August 10th to 17th) which includes a nine-day art exhibition, and six days of splendid music by internationally acclaimed musicians.

David Juritz, was recently asked whether the Festival is affected by competing events. He summed up the reasons why it was not: "The Festival has acted as a catalyst for new musical projects that go on to other stages. It is different from other festivals that have favourite classics played by a roster of visiting musicians; instead here there are regular musicians performing a much wider range of music." It was pretty much that kind of

festival that inspired David when he first arrived on 21st August 1997 as Music Director, and he's not planning on changing it.

The Festival has equally inspired the village of Burton Bradstock to come together in a remarkable way for the past 4 decades. With the enthusiastic support throughout the community –which has been essential in bringing renowned musicians to Burton Bradstock each year – both by practical assistance, and by supporting tickets sales, the it goes from strength to strength. Forty-two years is a huge credit to all involved and there is no doubt there will be another wonderful season ahead, and the evening of Friday 6th June looks set to be a magical one.

For more information contact Laura Nottingham on 07710 466876.

Burton Bradstock WI

In April we had our Annual Meeting at which we elected the new committee and President. As usual the present committee were happy to be re-elected but two more members were also voted in. I am



pleased to announce that our new President is Carol Higo, who is keen to take on her new role. Our grateful thanks go to Alison Hawes, our retiring President, who has worked so hard over the past year and done a fabulous job - she will be a hard act to follow!

Also during the meeting we had a picture quiz where we had to recognise various scenes in Dorset – so frustrating when you recognise the place but can't remember exactly where it is. One team did well, though and scored a creditable 18 out of 20! Of course, there were the inevitable refreshments too – a variety of nibbles and choice of Prosecco or tea/coffee. All in all an enjoyable evening.

On 8th May we shall be celebrating the 80th anniversary of VE Day, with an afternoon tea, which will commence with an old-fashioned Beetle Drive. A big thank you to member Maureen Miller who kindly suggested that a team of members organise this special occasion for the committee instead of the other way round. We are looking forward to that.

Tying in with this celebration, the speaker for our meeting at 7.30pm on 13th May will be Chris Stevens from Bridport Museum with a talk entitled "The

Home Front – the War Effort in Bridport during World War 2”. Maybe some of our older members might have some memories to share as well.

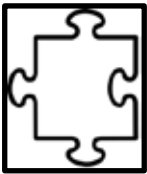
Also in May the Lunch Club will be setting off to The Admiral Hood in Mosterton, a little further afield than usual.

Once again we shall be running the cake stall at the Village Fayre on Bank Holiday Monday, 26th May – but be early as we tend to sell out very quickly. There will also be a WI craft stall for which members have been busy making items. See you there!

Janet Pearson 01308 898346

The Friends of Burton Bradstock Library

Many thanks to all who supported our recent Book Sale in April. We received a great selection of books and had a strong turn-out of buyers. The takings in support of the Friends of the Library showed a heartening increase so thank you all.



The jigsaw table seemed to be much appreciated with customers being tempted to have a go. We shall continue to have a jigsaw laid out, probably one a month, but if you all get really keen it might be more often! Many thanks to Brenda for arranging this.

Normal library opening times are:

Monday 2.00pm-4.00pm
Wednesday 10.00am-12noon
Thursday & Saturday 2.00pm-4.00pm

Please note that the Library will be closed for the two bank holidays on 5th and 26th May.

burtonbradstocklibrary@gmail.com, www.burtonbradstockvillage.org/library
01308 897563

Sue Brown, Chairman

Greenfingers Club

DON'T MISS OUT... on our Marvellous May Speaker!

We are delighted to welcome back Karen Broad talking about Easy Ways to Use Up Surplus Fruit & Veg, at 7.30pm Thursday 8th May.



It'll be a good theme to prepare us for our fruitful gardens & last time she brought lots of goodies for us to try! Please bring any spare plants (as donations go to Weldmar Hospice). As always, Tea, Coffee & a Raffle, too. Entry: £1

Cilla's May Checklist - Begin feeding containers with a weekly liquid feed. Harden off tender plants before planting out. Plant up hanging baskets & large pots for summer flowering; protect from any late frosts. Put supports in early for perennials. Plant out dahlias. Prune early spring-flowering shrubs once the flowers are over; take cuttings from tender perennials eg fuchsias & pelargoniums. Keep fruit bushes, trees & strawberries well-watered. Continue successional sowings of vegetable crops. Plant up tomatoes & peppers in their final containers. Sow climbing beans (a few seeds every 2 weeks) to provide a succession of crops. Pinch out tips of broad beans to discourage blackfly

Burton Bradstock Bridge Club

We are a very friendly group who meet in the village hall every Tuesday afternoon from 1.45pm until 4.30pm to play duplicate bridge. If you have played bridge before but feel you are a bit rusty this would be ideal! We could find you a partner if necessary and you would be assured of an enjoyable afternoon with a break for tea and biscuits. Please come and make some new friends. For more information please contact Kathy on 01308 485626.

Burton Coffee Mates

This month's Coffee Mates on May 8th will be in the afternoon because the church is being used in the morning. We will be having tea and cakes from 2.45pm -4.00pm and look forward to seeing everyone there. For further information or transport please ring Pauline on 898327.

Supper Club

This month's Supper Club is on Monday 12th May.
Any enquiries please contact Mags Chue on 07790811905

Littlebredy

Village Correspondent: Philip Williams
pw@bridehead.com Tel: 01308 482232
Village website: <http://www.littlebredy.com>



Readers may remember that last December's edition provided publicity (and sought local volunteers) for an initiative called "Past Participate" which was intending to catalogue and research as many of the sarsens in the Valley of Stones as possible, with Dr. Hayley Roberts as the lead academic. Hayley now tells us that work is continuing apace, with surveys of the stones undertaken throughout the winter, with volunteers braving the weather when necessary. There has been a discovery of a prehistoric brick kiln, which will be excavated in June, and guided walks of the site can be arranged. There is a mailing list for anyone seeking further information or wanting to get involved, and anyone interested is asked to contact Hayley on hayley@pastparticipate.co.uk or by ringing 07955 084661.

Ascension Day is marked 40 days after Easter, and falls this year on Thursday 29th May. As well as its biblical significance, it was apparently traditional in former times to use the occasion for a blessing of the wells – and by extension to give thanks for running waters as a source of life and health. As the latest of his rural commemorations, the Rector intends to mark the occasion with an appropriate service here at 11.00am that day, ideally taking place beside the source of the River Bride at the waterfall (but in the Church if weather dictates, with a visit to the riverside to follow). The event may be followed by one of Andrew's legendary local walks, but there are no details yet. In any case, it is an enterprising idea, which is commended to anyone wanting to mark Ascension Day in this slightly unusual way.

Earlier in the month, the PCC's Annual Meeting will be held at Bridehead at 2.00pm on Friday 9th May. This is open to all parishioners with an interest in

the future of the local Church, though admittedly the time of day has been chosen as a “least worst” option for various reasons, accepting that it might not suit everyone. Everyone is of course very welcome all the same.

Shipton Gorge

Village Correspondent: Richard Hewlett
Greenways, Shipton Gorge
01308 787278 richardhewlett419@gmail.com
Village web-site: www.shiptongorge.org.uk



Welcome to our village diary

*Just search for Shipton Gorge Diary or go directly to
<https://shiptongorgediary.co.uk/>*

You'll be able to find out all that's going on in the village from the Village Society, the New Inn / New Inn Support, the Village Hall, Shipton Gorge Heritage, the Parish Council, the Parochial Church Council, and other event organisers.

St Martin's Church

Our Church Services

Breakfast Church 9.30am (in the Village Hall) on 11th May,
with Vicky and Tish

Festival of Bells and Bell ringing for Bell Sunday 2.00pm on 18th May,
service led by the Rev'd. Andrew Rawding

Holy Communion 11.00am on 25th May, led by the Rev'd. Andrew Rawding.
Everyone is welcome to join us at these services.

May Floodlight Sponsors

Lesley Garner: to celebrate her sister Kate's 60th birthday on 20th

Roy Symes: Happy birthday Janice, for your special birthday on 21st

Chris Nunn: for Ruth's belated birthday

Martin & Jane Lerner: in memory of Lynne Grace 13th February 1952 to 2nd
March 2025

Thank you to our sponsors for lighting up St Martin's Church.

You too can help to keep the lights shining by sponsoring the floodlights for a special occasion. For a suggested donation of £5, your occasion will be listed in the Bride Valley News and on posters on the notice boards. Please contact Phyl Webster on 01308 898657, or push a note through Cuckoo Cottage post-box.

Village Hall

April 2025 100 Club Draw results

1st 8 £25 Chris and Ruth Nunn
2nd 17 £10 Linda Simpson
3rd 111 £5 Marina Hamilton

Congratulations to all winners.

Parish Council

The Annual Parish Assembly took place on 10th April. As well as very interesting updates from all of the village organisations – and thank you to all those who presented – we were delighted to welcome Nigel Osborne from Dorset Council's Emergency Planning Team. Our thanks to Nigel for a very informative and thought provoking talk on the subject of resilience and what we can do both as individuals and as a community to prepare for such things as prolonged power outages, extreme weather conditions, and other potentially serious disruptions to our lives. We will be communicating more on this over the coming months.

We also heard at the meeting that Beryl Wood, a long-time resident of the village who recently passed away, had been incredibly generous and left the Village Hall, the Village Society, and the New Inn £10,000 each in her will. Fantastic news – thank you Beryl!

The next Parish Council meeting is on Tuesday 6th May at 7.00pm in the Village Hall. Do come and join us.

Village Society

Quiz Night with Fish and Chip supper

Village Hall Tuesday 13th May

£13.50 per head

Doors open 6.30pm, quiz starts at 7.00pm

Howard is your quiz master.

If you have not already booked your table (up to eight persons), please ring Sally Parker on 897168 to do so, together with your 'fish and chips' order. Please don't delay to avoid disappointment. We look forward to seeing you on the night.

Shipton Gorge Heritage

Heritage Gin Club

The winners in the April draw were Jenny Dixon and Peter Tiller. Congratulations to both of you.



Saunders Richardson Wood

A few more small trees have been planted up, including some Hawthorn near the bank within the canopy drop zone of a diseased Ash tree. As well as enrichment planting, hazel and hawthorn will re-sprout if branches are dropped on them and they will start to provide low mid canopy cover. We are hoping that a few of the nest boxes put up at the beginning of the year will be occupied and that we should be hearing the sound of nestlings calling out for food. Sunday 4th May marks International Dawn Chorus day – why not set your alarm early and go out into your gardens and listen in. There are various call identifiers which can be downloaded to your phone (Merlin is one) and you don't always need a phone signal to use them. The wood will be open on Wednesday 28th May at 11.00am–12.00noon; we will be doing some general maintenance, creating a few more dead hedges and checking the young trees. If the dry spell continues, we will also be watering them! If you would like to come along and either help or have a walk round, that would be wonderful. This is a members' only event, but we can sign you up on the day and there is no charge to join.

Shipton Gorge Orchard

The primroses and daffodils have been splendid this year. The Damson tree has blossomed – always the first – but May will be when the blossom on the Apple trees will be at its best. Grass will be getting longer and we will be repeating the cutting regime again this year, with a meandering path cut through the Orchard and around the trees. We will be in the Orchard on Monday 12th May at 11.00am. We will need to clear round the bases of the trees and put down mulch mats to cut down competition from grass and weeds. All residents are welcome to come along, either to help or even just for a chat if you prefer.



A reminder that we intend to produce a calendar for 2026 which will be on sale late summer / early autumn – we are therefore looking for some photos to feature in it. These can be of anything or anywhere around the village. If you have any you think would be good to include, then please email annecrowe21016@hotmail.com or speak to any of the trustees.

If you would like to become a member, or are interested in supporting the charity in any way, please contact Anne Crowe on 07393 214635 or email annecrowe2016@hotmail.com.

Details as usual on our website:

http://www.shiptongorge.org.uk/Shipton_Gorge_Heritage__16417.aspx
and in the Shipton Gorge Diary <https://www.shiptongorgediary.co.uk>.

New Inn update

Firstly, NISL give a massive vote of thanks to Andrea for managing the New Inn over the last few years, and I'm sure all villagers and the NISL team wish Andrea the very best for the future.

Secondly, at the time of writing, the New Inn will be closed while we recruit a new tenant. NISL are progressing with applications and we hope to be able to share good news with all our customers soon about our re-opening with a new tenant and plans for the future.

Although it's hard to 100% plan ahead, we've scheduled two music events for 2025: The Skalatans, a fabulous local ska band, on 26th July, and another live music event on 16th August. More details and ticket information will follow on the New Inn website page, and on local social media and other comms.

Friends of the New Inn Support (FONIS)

This group is being resurrected. FONIS were formed a few years ago to play an integral part in the success of the New Inn, with villagers helping the New Inn in different ways. If you would like to play a greater part in supporting your local pub by being a FONI, or by contributing in other volunteering ways, please contact a member of NISL, or Graeme Foster graemefoster123@yahoo.co.uk and we'll gladly accept your help.



**A Festival of Bells
and Bellringing at
Shipton Gorge**

Sunday 18th May

**2pm service followed by open ringing and
refreshments.**

**If you are a bellringer or just love the sound of the bells, come along
for this special celebration!**

**And if you are curious about bellringing and would like to watch the
bellringers in action, do come along!**



Litton Cheney

Village Correspondent: John Firrell
 jfirrell20@gmail.com Tel: 01308 482313
 Village web-site www.littoncheney.org.uk



St. Mary's Church

On Thursday 8th May, to commemorate the 80th Anniversary of V.E. day, there will be a service at 9.15am for Thorner's pupils, parents, and everyone who would like to attend. All very welcome! Some of the children will be chiming the bells before the service and the St. Mary's Ringing team will be joining in the national ringing at 6.30pm that day.

During the summer months our service on the fourth Sunday will be Evensong instead of a morning service. So, 18th May at 6.00pm will be our first Evensong of the season. It's always a peaceful way to end a lovely summer's day so why not give it a try?

If you would like the church to be floodlit any day for a special occasion for £5, please contact Freddie Spicer (482617)

Parish Council – Parish Annual Assembly – Tuesday 20th May – 7.00pm – All Residents welcome

Please note in your diary – this is where you get to have your say on local issues, and the Parish Council reports on the past year, and a view into the future. It's also a chance to meet fellow residents – lifetime friendships have been known to happen at these events! The Annual Meeting of the Parish Council will follow the Assembly – All welcome.

Potholes – don't just mutter about them. Report their existence on the Dorset Council portal

Full Fibre – If it's available to you, you are advised to grab while it's there. Full fibre is available to most properties in the village. Those that are currently not connected will be in the coming months. Openreach will bring full fibre to your house at no charge. It is then for you to contact your ISP to arrange connection. The additional cost for additional speed is minimal, and provides a considerable element of future proofing with regards to ease of maintenance and usage. Our thanks to Rob Matthews (Litton) and Angus Handoll (Long Bredy & Kingston Russell)) for keeping Openreach focussed on our villages.

VE Day 80th Anniversary Monday 5th May 12.00noon until 2.30pm
Bring-Your-Own-Picnic Lunch at LATCH. Join fellow residents and families for a VE-style celebration al fresco picnic on the terrace of our Community Hall. It will be fun and frolics for all, including a coming together again of the Litton Cheney Community Choir, under the direction of maestro, Paul Cheater, who will regale us with songs of that era, and to which we can all join in.

Chilcombe Bridge – our thanks to Russell and Chris Randall for the magnificent bridge that has now been installed as part of a public right of way in Chilcombe. Our thanks also to Dorset Council, Litton Cheney Trust and several donors including the West Dorset Ramblers Association for providing the finance to make this long awaited amenity possible.

What's on at Litton and Thorner's Community Hall (LATCH) in May

REGULAR EVENTS

Mondays	3.30 – 4.30	Big Q (term time only)
Tuesdays	4.45 – 5.45	Short Mat Bowls (Ron Davidson 482661)
Wednesdays	4.45 – 5.45	Table Tennis (Ron Davidson 482661 or Paul Kingston 482162)
	7.00	Mindful Movement (Jane Hutchins 07882 527697)
Thursdays	9.15 – 11.15	First Steps Toddlers (fortnightly, term time only)
Fridays	10.00 – 12.00	Art Group in Meeting Room (2 nd ,9 th and 16 th)

OTHER EVENTS

Thursday 1st	7.30	Film Night "Bottle Shock"
Monday 5 th	Lunchtime	V.E. Day celebration "Bring Your Own Picnic" + music
Monday 19 th	7.00	Gardening Club meeting (Main Hall)
Tuesday 20 th	7.00	Village Assembly and Parish Council AGM
Thursday 22 nd	6.00	Mellulah Yoga (w.mellulah.co.uk)

Village Cafés: The hall is available for hire free of charge on Saturday mornings for a Café to raise funds for any group. It's a good social event for the community and always popular.

Hall Bookings/viewings: Wendy Firrell 01308 482532 wtlitton@gmail.com

Storage Batteries installed at LATCH – Storage batteries have now been installed at the Community Hall. This completes the renewable energy circle – ground source heat pump, solar panels and batteries. Our thanks to the Community Infrastructure Levy, Litton Cheney Trust and Thorner's for making this financially possible. We anticipate considerable energy savings in the months and years to come. At the time of writing with the batteries installed for a day and half we have saved 89 trees, 5 tonnes of CO2 emissions and 2.5 tonnes of coal!

'Litton Cheney – It's Historic Sites and People', a history of the extended parish of Litton Cheney, is a 276-page A4 book and is available from the author and historian-in-residence, Paul Kingston. paulkingston1440@btinternet.com. A fascinating and intriguing detailed record of Litton's days of yore.

The White Horse

What a glorious start to April we had? Lots of sunshine and we had our first outside live music event of the year. Now we're moving into May we're hoping the weather will be even better for the bank holiday weekends where we'll have live music on the Sunday and Monday afternoons.

Every other Tuesday is quiz night with Basilico pizzas and of course Fridays brings us to Fish and Chips (please book in advance), Happy Hour and our famous Meat Draw. Sunday roasts are still very popular, we recommend booking to avoid disappointment and in the afternoons starting at 4.00pm we have Live Music.

We look forward to welcoming everyone in May – Andy & Liz

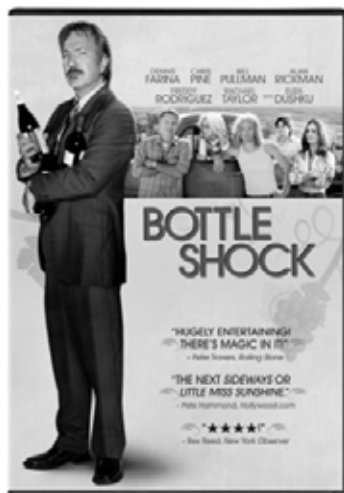
BRIDE VALLEY FILMS - Next films at Litton Cheney Village Hall.

DON'T MISS OUR SPECIAL SCREENING

(for our final film this season).

THURSDAY 1 MAY "BOTTLE SHOCK" – 'vintage entertainment!'

Steven Spurrier who of course lived in Litton Cheney and started Bride Valley Vineyard was internationally well known in the field of wine. In 1976, he was running the *Académie du Vin* in Paris. A visit to California led him to organise a tasting in Paris pitting the Californian wines against the French. The surprising results came to be known as The 'Judgement of Paris' and had a lasting impact on the global wine industry. **Alan Rickman** adds his characteristic aplomb to his depiction of Steven in this entertaining film. Cert.15 1hr.45"



Doors Open: 7.00pm. Films start 7.30pm. TICKETS: £5.00 (to include a glass of wine) Tickets in advance from: Sally Dyke 482752, Elizabeth Kingston 482162, Bella Spurrier 482367 or on the door. (All nos. 01308)

More films in the autumn - look out for further details on posters, at <http://www.littoncheney.org.uk/bridevalleyfilms.htm> and in the BVN.

Telephone Kiosk Exchange

Please can you help to keep the telephone kiosk exchange clean & tidy. Very sadly the kiosk has been in a sorry state over recent weeks. There have been boxes & bags of used clothes & unclean toys & large outsized books. We only have a few wonderful volunteers who work hard to help keep the shelves looking tidy but we have recently been making weekly trips to the recycling centre with heavy and unsuitable items left in the kiosk. The exchange is a great community resource which we hope you all enjoy so here is a polite reminder of how we can all help to keep it looking smart and welcoming:

ONLY EXCHANGE ITEMS IN GOOD CONDITION - SMALL SUITABLE BOOKS, SMALL TOYS, PUZZLES AND SEEDS.

PLEASE DO NOT LEAVE CLOTHES, LARGE BOOKS, OTHER MISCELLANEOUS UNSUITABLE ITEMS OR LEAVE BAGS AND BOXES ON THE FLOOR.

IF THE SHELVES ARE FULL WITH BOOKS, PLEASE DO NOT LEAVE ANYWHERE ELSE ON THE SHELVES OR IN THE KIOSK – KINDLY POP BACK ANOTHER TIME.

Thank you for your support.

SUMMER FETE – Saturday 7th June

Thorner's, Litton Cheney Summer Fete will be held at the school and at LATCH on **Saturday 7th June from 1.00pm-4.00pm**. There will be the usual mixture of summer fete activities ranging from Welly-Wanging, Beat the Goalie, BBQ and Cream Teas, Forest School Activities, Crazy Golf, Plants and Produce, Maypole Dancing, Bottle Tombola, Soak-the-Sitch, Dog Show, Raffle with £100 first prize and lots more! The event will be cash only and will take place in both LATCH and school grounds.

Pauline Macaulay's Note on leaving Litton Cheney

It began with a hunt for privet leaves for a jar full of hungry stick insects we had bought in Sherborne. It was summer 1979. We were staying in the Litton Cheney youth hostel with our younger sons. We came across the cottage in Church Path for sale - by late autumn it was ours. A bolt hole from our busy lives in London, it became our home especially during retirement, and a sanctuary during Lockdown.

As we are now leaving Litton Cheney and the beautiful Bride Valley, we take with us wonderful memories of many lovely friends, wonderful long walks, sailing our boat out of Weymouth, learning to windsurf off Portland,

preparing for the London Marathon along wintry lanes, and being windblown on Eggardon Hill.

We have loved helping to create the kneelers for St Mary's and the village textile for LATCH, and serving as school governor and trustees for several local charities. Thank you. Pauline & Patrick.

Puncknowle, Swyre & West Bexington

Village Correspondents:

Elizabeth Slater (Puncknowle)

liz@ruddle.org.uk Tel: 01308 897751

Jill Neill (Swyre & West Bexington)

Jill.neill@live.co.uk Tel 01308 897479

Village website:

<https://puncknowle-swyre-pc.gov.uk>



The Antiques Road Show

On Thursday 3rd April a steady stream of people came to Puncknowle Church bringing a variety of objects with them – books, vases, stamp albums, knives, etc. - to the Charity Evaluation Evening held by Dukes, the auctioneers. It was a very enjoyable evening, with people sitting and chatting over a cup of tea or coffee whilst they waited their turn. £156 was raised for the church. A big thank you to everyone who helped to make it such a successful time.

The Early May Bank Holiday weekend 3rd - 4th May

We will be holding our May Flower Festival on the weekend in Puncknowle Church. The church is dedicated to St Mary, and May is the Month of Mary. However, it is also the 80th Anniversary of VE Day, so there will be a VE Day theme. You are welcome to help decorate the church on Friday 2nd May, or to bring flowers at any time the church is open. Let us fill the church with flowers. On Monday 5th May (2.00pm – 4.00pm) there will be a Garden Party at the Crown Inn at Puncknowle with cream teas, stalls and games. Come for an afternoon of fun together and raise money for Puncknowle Church and for the Weldmar Hospice.

What's on at Puncknowle Village Hall in May		
REGULAR EVENTS		
Mondays	2.00pm – 3.00pm	Pilates Contact Sarah on 07885 037340 or by email sarah@modified-pilates.co.uk
Wednesdays	10:00am – 12:00noon	Table Tennis Contact Brian on 01308 897987
Wednesdays	7.00pm – 9.00pm	Table Tennis Contact John on 07557 963618
OTHER EVENTS		
Thursday 1st	2.00pm – 4.00pm	Craft Club Contact Brenda on b.oliver@btinternet.com
Tuesday 6th	7.30pm – 10.00pm	Parish Council Meeting Open to the Public More information: https://puncknowle-swyre-pc.gov.uk/
Thursday 8th	7.00pm – 10:30pm	Whist Drive Contact Jenny on 01308 897863
Monday 19th	7.00pm – 9:00pm	Benefice Meeting
Tuesday 20th	1.00pm – 2.30pm	Luncheon Club Contact David on 01308 898492
Thursday 22nd	7.00pm – 9.00pm	Neighbourhood Planning Meeting Open to the Public. More information: https://neighbourhoodplan.puncknowle-swyre-pc.gov.uk/
Thursday 29 th	7.30pm - 10.30pm	Puncknowle and Swyre Annual Parish Assembly Open to the Public. More information: https://puncknowle-swyre-pc.gov.uk/parish-council-2/annual-parish-assembly/
Friday 30th	10.00pm – 12.30pm	Art Club Contact Sally on 01308 897987

Puncknowle Swyre & West Bexington Lunch Club

Incorporates Chilcombe, Long Bredy and Little Bredy

Puncknowle Village Hall 12.30pm for 1.00pm, Lunches cost £6

May 20th Lasagne with Salad & Garlic Bread, Dessert to follow

Future dates 2025

June 17th Sausages Mash & Gravy, Dessert to follow

July 15th Ham or Beef with Salad & New Potatoes, Dessert to follow

All meals include fruit juice to start and cheese and biscuits with tea or coffee. Vegetarian option can be provided.

Enquiries – please contact **David Buckland**

01308 898492 for more details

Puncknowle and Swyre Parish Council is Looking for New Council Members

You do not need any special skills or background to contribute to our team, just a passion to care about our community. If you would like to make a difference, then come and talk to us about what we do. We can tell you more about our work or come to our next council meeting at Puncknowle Village Hall on 6th May 7.30pm and see what we do.

Further information and an application form is available from the clerk:
clerk@puncknowle-swyre-pc.gov.uk

Applications to the clerk are requested by 31 May 2025

Puncknowle Swyre and West Bexington Parish Assembly

This will be held on Thursday 29th May at 7.00pm in Puncknowle Village Hall. Further details will be forthcoming.

The Rev Dr Gary Bowness continues his tongue-in-cheek letters from Uncle Eustace



From The Rectory
St James the Least of All
My dear Nephew Darren,

I have to say that the couple who complained that you never noticed they had been missing from church for a month had a point. There is a simple way of noticing when someone is absent: everyone sits in the same pew. Every Sunday. Always.

Little Miss Margison sits in the pew after the third pillar on the right here at St James the Least. As she walks up the aisle, you can sense her counting the pillars until she reaches the right one, which then allows her to sit in front of it. I have speculated that if I ever had that pillar removed, then the following Sunday, she would have a complete mental collapse.

One Sunday a visiting family arrived early and sat down; three people in an empty church seating 200. Colonel Wainwright and his wife were the first of our regulars to arrive and froze in horror. The Colonel said in a deafening whisper to his wife: "There's someone sitting in our pew."

At least they had the grace - no matter how reluctant - for one week, to sit somewhere else. Unlike the Prentice family of husband, wife and three children, who arrived to discover that a visiting family of husband, wife and four children were sitting in their pew; six people in a pew that held eight. Or, it normally holds eight. That Sunday, it held thirteen.

We at least have one iconoclast in Miss Pemberton, who makes a point of sitting in a different place every week. This thoroughly unsettles the rest of the congregation, who fear she may sit in their seats during her nomadic wanderings. I sometimes wonder if she has

a chart at home with all the pew spaces marked on it and she strikes one off each week as she returns home after Mattins.

Occasionally the unexpected can happen. Mrs Cholmondeley arrived one week in good time, settled herself in her accustomed place, but half-way through the Service suddenly ran out of the building. Ten minutes later, she was back and in her usual place once again. It was only when the church filled with the smell of burned bacon that we understood.

That is why replacing pews with chairs in your church was a mistake. Pews can never be moved. You know where everybody is - or should be!

Your loving uncle,
Eustace

Could you Write for the BVN?

We would like to extend our coverage of the Bride Valley into both more general and specific topics, and if you could contribute please let the editor know or contact your local village correspondent. Contributions between 250 and 300 words please, and we can include a picture of two as well. Now is the chance to get into print! There follows two contributions from villagers recently received.

How the 80- and 90-Year Olds of Today Defeated Dorset County Council

The Library: DCC decided to close the Library. Full stop. The late Professor Bob Hynds, a very unassuming gentleman, together with a small committee, decided otherwise; he just tied them up in knots! At a very crowded meeting in the village hall, it was found that almost everyone had contacted DCC on the matter. The village school also drew a banner. It was a prolonged process but we kept the Library. The Friends of Burton Bradstock Library now has charitable status and maintains and runs the Library. Membership costs a minimum of £5 and is the main source of funding.

The Playing Field: This was acquired through another small committee, which applied for every grant available. In addition, a sale was held in the village hall and donations were made; in the end it was oversubscribed. A good outcome.

The Hotel: DCC were really difficult with this and would not say what they wanted, but with patience, perseverance and support at planning meetings, the champagne was at last drunk.

Manor Farm: There were crazy ideas of boring offices or such like here, but a very knowledgeable home owner saved the day, so now it has a happy resident.

The Old Rectory: The previous owner of this property wanted to divide it into two, which would have meant a new bridge in Grove Road. Again, a committee was formed who tied DCC up in knots with measurements etc, with the result that it now has London second home owner who, using local labour, has restored it and keeps it well cared for.

Other Things Achieved: Safer pavements by the Anchor pub, Charles Road resurfaced and a sign post for Cliff Road.

All these happenings have made the village very attractive to new buyers, buy to let, second homes and new residents. Unfortunately, at that time, many of these people did not appear to know what a neighbour was and had not lived in a community where residents know and help each other. So the village changed.

Fortunately now, a few years later, the people arriving wish to join the community and enjoy what living in an old-fashioned village is like. It's worth remembering that the village as a whole is needed to get things done. We

have a lot of expertise among residents and the Parish Council should take advantage of this and use it to achieve their aims. Most of the successes were achieved by village expertise, with the Parish Council in the background, though they do need thanks for the Playground. Otherwise, it was mostly Us!

An Aged Owl

The saga of the incinerator dustbin

My previous incinerator had come to the end of its natural life, the bottom having burned out and in danger of collapse. It was obvious that we needed a new one which I duly ordered from Amazon and it arrived the next day in a large box from which I struggled to extract it

Of course it needed new legs fitted. These came, three of them, together with screws and nuts with which to fix them to the bottom of the incinerator. Now what would be the logical way to fix the legs?. No, that would be too simple. What would be the illogical way to fix the leg onto the bottom of the incinerator? I will tell you. Are you sitting comfortably, then I will begin.

First of all, you have to lay the dustbin on its side and then you have to kneel beside it and locate the hole at the bottom of the incinerator in which you must insert the small screw on which to hang the leg. This requires a certain amount of dexterity which your 90-year-old does not possess, but does possess the cantankerous need to succeed? Come what may.

Eventually, I located the hole and inserted the screw which you have to realise is very small, and holding the screw in place with one hand and hanging the leg on the outside on the end of said screw so that it would remain in place while I scabbled in the grass for the nut, which had escaped from my hand while performing the previous procedure, was not the easiest thing to do.

The nut having been found was attached to said screw; the first attempt to screw it on failed naturally because the thread was crossed and so was I. Eventually, after about half an hour of kneeling in the grass and attaching one other leg, I gave up and tried to stand up, that failed spectacularly and I found myself struggling towards the fence on my knees so that I could use it as a support while I stood up. My knees did not appreciate this at all, and as I tried to get up, they showed their displeasure by being extremely painful and refusing to straighten to their normal position, so I gently rolled over into

a foetal position moaning gently and wishing that I had my iPhone with me to summon help, but of course I did not have it.

With all the struggling, I was beginning to feel more like a 105 year old rather than a little over 90 and it was amazing that nobody saw me struggling back to the comfort of my home and collapsing into my chair. My first attempt to get out for a cup of tea and a biscuit failed and I rapidly returned to my chair until 4 o'clock when I said "this is nonsense and I must have my tea and little chocolate bits". This was accomplished satisfactorily, and then I thought it was time, to give you the details of the saga so that you may commiserate with me suitably with lots of aaaahs and soothing murmurs.

I do hope the saga will not disturb your sleep tonight. Tomorrow, having decided that there is a simple way of attaching the last leg I will see if I can stagger over there to attach it. I will let you know if I am successful. Meanwhile, sympathy in all its forms would be gratefully received.

Bill Turnill

ps It was Successful!

May in History:

The Venerable Bede – the father of English history and the man who gave us ‘Anno Domini’

1300 years ago, on 26th May 725, the Venerable Bede died. This English Benedictine monk, historian, linguist and teacher is known as "the father of English history." He helped to popularise the idea of dating years from the birth of Christ (Anno Domini – AD).

Bede was certainly born into a well-to-do family, but we have no details except that he was sent to a monastery – Monkwearmouth in Northumbria – at the age of seven. He later moved on to Jarrow under the tutelage of Abbot Ceolfrith, both of them surviving the devastating plague of 686.

He was never a great traveller, preferring to spend most of his life studying and writing in Northumbria, except for visits to Lindisfarne and York. He completed about 60 books, most of which have survived. Not surprisingly, he was considered the most learned man of his time. Bede was ordained a deacon at the early age of 19 and became a priest when he was 30. He was

known for his devotion to prayer, for studying the Scriptures and for his faithful observation of the monastic discipline. His most famous work is the *Ecclesiastical History of the English People* (*Historia Ecclesiastica Gentis Anglorum*), which is widely relied on as historical source material.

He was particularly interested in the academic discipline of *computus* – the science of calculating calendar dates, particularly, and controversially, the date of Easter. The word ‘computer’ stems from this work. Bede was also a skilled translator, and he made the writings of the early Church Fathers accessible to the English people.



Bede died at the age of 61 or 62 at Jarrow and was buried there, but his remains were later moved to Durham Cathedral. He was declared a Doctor of the Church by Pope Leo XIII in 1899.

Tim Lenton (from The Parish Pump)

Your Local Electrician & Solar Experts



At Ellward-Smith Electrical Services Ltd, we handle everything electrical, from small repairs to full rewiring. Our team of qualified electricians are ready for any job, big or small.

Interested in going green? We specialise in solar panel installation, battery storage, and EV chargers, offering sustainable solutions to reduce your energy bills and carbon footprint.

Contact us today for a free quote!



07741278346



ellward-smith.co.uk



Home Help & Support Services Offered Throughout Bridport, Beaminster, and Dorchester Areas:

- Personal Care, Medication, & Night Care
- Companionship & Welfare Visits
- Meal Preparation & Shopping Visits
- Transportation
- Cleaning & Laundry/ Ironing Service
- Office & Holiday Let Cleaning
- End of Tenancy Cleaning
- Dog Walking & Pet Sitting
- Administration Support



I have over 16 years of adult care experience supporting a range of individuals with varying health & social care needs. Being qualified to NVQ/ Diploma levels 2, 3, and 5 and having spent almost ten years working as a Registered Care Manager within both Residential & Home Care settings. I have a further 50+ adult care, lifestyle, and accommodation management related courses to which support me to offer you the above quality and professional services.

Being fully insured, referenced, and DBS checked: Please contact me for a free no obligation information pack issued via post or email and/ or a free informal home visit to discuss your home support needs.

Contact 07882800613 or email ivershomesolutions@hotmail.com



PERCIVAL OSTEOPATHS

Osteopathy for Babies, Children and Adults
Cranio-sacral, structural and
Perrin Technique (for ME/CFS)

Litton Cheney, Dorset 01308 482703
Or book on line at Percivalosteopaths.co.uk

**bride
valley
cleaning**

Call or text Sean on:

07787 597871

 **Bride Valley Cleaning**

- * EXTERIOR CLEANING
- * MOSS REMOVAL
- * GUTTER CLEANING & CLEARING
- * SOFFITS & FACSCIAS CLEANING
- * STEAM CLEANING
- * "REACH AND WASH" WINDOW CLEANING
- * PRESSURE WASHING SERVICE – PATIOS, DRIVEWAYS ETC

Fully insured and based in the Bride Valley

Keep This Number Handy
You May Need it to Contact...

YOUR LOCAL ELECTRICIAN

Call Olly on 01308 293125
serving Bridport and the surrounding area



Little Fones Landscapes Est. 1996

LANDSCAPE DESIGN: Traditional, Abstract, Continental, Cost Efficient & Low Maintenance.

LANDSCAPE CONSTRUCTION: Groundwork, Driveways, Walling, Decking & Fencing to Paths, Patios, Ponds & Pergolas, Border Creation & Planting.

GARDEN RESTORATION: Historic Manors & Cottage Gardens Recycled & Regenerated

GARDEN CARE & MAINTENANCE: All forms of Garden Works Undertaken, Lawn Care, Border Maintenance, Professional Pruning.

ARBORICULTURE & CONSERVATION: Woodland & Wildlife Habitat Management, all forms of Tree Surgery & Planting, Hedge Laying, Seeding & Spraying.

EFFICIENT COMMERCIAL CONTRACTORS AND PERSONAL GARDENERS

01308 455755

info@littlefones.co.uk

www.littlefones.co.uk





BRIGHTEN UP YOUR DAY

HAND CRAFTED SINCE 1982 | WE MAKE, SUPPLY AND FIT FENCES & GATES



OUR COUNTRY STORE IS ALL YOU NEED FOR:

- FENCING
- HANDCRAFTED GATES
- SHEDS & STORES
- ANIMAL HOUSING



Telephone 01308 421 545 • www.johnbrightfencing.com

Paverlands Farm, Salway Ash, Bridport, Dorset DT6 5HT

SLADERS YARD

Contemporary Art & Craft Gallery

Changing exhibition programme
Petter Southall furniture design
Internationally acclaimed
artists and makers

'visit this wonderful place'
Financial Times

@sladersyard
sladersyard.co.uk



CAFÉ SLADERS

Open Wednesday - Sunday 10am-4pm

Superb seafood & vegetarian menu
Delicious Breakfast, Lunch & Tea
Evening events. Parties

Reservations welcomed
T: 01308 459511

cafe@sladersyard.co.uk
West Bay Bridport DT6 4EL

TONY HUMPHREY BUILDING

VALUE QUALITY CRAFTSMANSHIP

HISTORICAL and LISTED BUILDING SPECIALIST

- Alterations & refurbishments • Carpentry and General Building
- New Build, Extensions & Renovations

Fully insured family business with over 40 years' experience

Excellent References

One job undertaken at a time to guarantee complete focus on your project

For free estimates and advice please contact Tony
Mobile: 07742 097514 Email: humphreythebuilder@gmail.com

GRASSBY & SONS LTD



Proud to have served the
local community since
1861

FUNERAL SERVICE
8 Princes St, Dorchester

MEMORIAL MASONS
Dorchester Road, Grimstone



www.grassby-funeral.co.uk Tel: (01305) 262338
www.grassby-stone.co.uk Tel: (01305) 269678



Carpets Select

The Home Selection Specialists

"The carpet store that comes to your door"

Choose in comfort at home

Free home select service for: Carpets - Vinyl's
Wood Flooring - Laminates

Brought to you at very competitive prices

Call Steve, John or Lea

01305 753998

Or visit our showroom at:

Unit 1, Grove Trading Estate, Dorchester, DT1 1ST

www.carpetsselect.net / Email: info@carpetsselect.net

Upholstery by Gillian

freshen up your favourite furniture

m: 07817 239 783 t: 01308 456002

upholsterybygillian@gmail.com

A J Wakely & Sons

Independent Family Funeral Directors

- 24 Hour Service -

Private Chapels of Rest

www.ajwakely.com



Golden Charter
Funeral Plans



Bridport Tel: 01308 423726

Beaminster Tel: 01308 862358

Lyme Regis Tel: 01297 443835

Please contact Simon Wakely, or a member of our dedicated team for any advice or guidance.



On Your Marks

Gardening & Handyman Service

A friendly and trusted local garden maintenance and handyman professional, here to carry out a range of services, such as:

Lawn Mowing

Hedge Trimming

Weeding

General Garden Maintenance

Pressure Washing

And other odd jobs

Contact Mark on

07900112060

markpile69@gmail.com



A family run garage offering servicing, repairs and MOT's for your car or commercial vehicle. Our lead technician Gary has been servicing Charminster and the local area for over 25 years, now heading his own team of mechanics and qualified MOT testers. Now incorporating Dorset Performance Exhausts & Tuning Ltd.

- Class 4 MOT's for cars and smaller vans
- Class 7 MOT's for commercial vehicles weighing 3,000 to 3,500kg
- Servicing, repairs, welding and diagnostic facilities
- Seasonal vehicle checks, including underbody rustproofing
- Hybrid Electric Vehicles
- Supply and fit new tyres, with over 100 in stock
- Agents for Terraclean™ DPF Cleaning
- Vehicle collection and delivery service.
- Courtesy cars available for booking
- Bespoke Exhaust systems & Engine Tuning



REAR OF FILLING STATION, A35 WINTERBOURNE ABBAS,
DORCHESTER, DORSET. DT2 9LJ

wataasLtd@gmail.com winterbourneabbasautos.co.uk

01305 880013

approved
garages.co.uk
Your Trusted Local Garage Finder

STAINED GLASS WORKSHOPS



*make your own leaded light panel in 2 days
expert tuition; small groups;
no experience necessary*

For course details and dates see www.jackiehunt.co.uk

contact jackie@jackiehunt.co.uk - 07785 512546

Commissions and repairs undertaken



Stephen Field Painting and Home Renovation

Woodwork and Carpentry
Fixture and fittings
All household repairs considered

✉ stephenfield24@hotmail.co.uk

☎ Tel: 01308 456059
Mob: 07952203093

FOURNIER

a success built on recommendations

🌐 fourniersltd.co.uk
✉ craig@fourniers.co.uk



Oil Boiler Service & Maintenance

- ☑ Central heating Oil Boiler servicing and breakdowns
- ☑ Oil AGA Servicing and breakdowns
- ☑ AGA 13amp Electric conversions carried out.



For a Local personal service, based in Bradford Peverell, Dorchester, Dorset
Call us now on 01305 262411
Emergency Line 07949 384326



JOBSON'S CHIMNEY SWEEPS

Traditional Chimney Sweeps
Clean | Professional | Friendly

Based in the Bride Valley

Call or text Callum:

Tel: 01308 301210

Mob: 07444411210

Email: office@jobsonschimneysweeps.com

- Fully Trained and Registered.
- Certificates Provided for Insurance Purposes
- £5,000,000 Public Liability.
- Traditional Brush & Vac Methods Used.
- Power Sweeping Available (If Necessary).
- Family Run for 20+ years.



Lee Quincey Landscapes

all aspects of garden work undertaken including

Fencing, pergolas, turfing, hedge cutting, trellis work, sheds, shed bases, decking, patios, garden maintenance and more.

Also available for house and shed clearance.

Over 16 years experience

Call us on **01308 482279** or **07896 326099** for a free quotation

Or visit **www.leequinceylandscapes.com**



Makers
& Menders
of Soft
Furnishings

Traditional Roman Blinds
Curtains & Cushions
Repairs - Repurposing - Light Upholstery

07716 729005 sewsavina@gmail.com
laurasavinasewing.co.uk

Bride Valley Catering

For any event
Family or corporate
Menus tailored to you...

bridevalleycatering.com
07595 467469

THE
CLUB HOUSE

SUNDAY LUNCH

TWO COURSES FOR £20*

*Not to be used in conjunction with any other discount offers

FRESH FISH DAILY

A selection of delicious, fresh fish
picked by our chefs every morning

SHELL FISH SELECTION

A variety of high quality, freshly-caught
shell fish dishes available

BEAUTIFUL GARDEN

Enjoy dinner and some drinks with
a fantastic view of the beautiful
West Bexington beach



**BOOK
NOW**

www.theclubhousewestbexington.co.uk

01308 898302

Beach Rd, West Bexington, Dorchester, DT2 9DF

Building
excellence
since 1930



CG Fry & Son

Est. 1930

CG Fry & Son's highly experienced Contracting Department offer a bespoke service covering all aspects of new build, restoration, and refurbishment for both private and commercial clients.

For more information call 01308 482000 or email
contracting@cgfry.co.uk | cgfry.co.uk

Jim Allen

Roofing and Building Contractor

- New Builds
- Brickwork, Stonework,
- Blockwork & Rendering
- Carpentry & Property Maintenance
- Roofing/ Re-roofs & Repairs
- Guttering & UPVC



No job too big or too small

Tel: 01308 863809 | Mobile: 07976 372045

Web: www.jimallenbuilding.co.uk E-mail: alljm996@aol.com

Early Morning Newspapers delivered

Call Mike on:
01308 898 744

Bride Valley Newsagent Ltd.
Est. 2002

Charlie Kennerley Chimney Sweep

Traditional and power sweeping

CCTV flue surveys | All work certificated | Fully insured

T: 07771 770769

E: info@charliekennerley.com

www.charliekennerley.com

Covering South Somerset, West Dorset and East Devon



SFA APPROVED
CHIMNEY SWEEP



Carpet World

THE CARPET SPECIALISTS
FOR WEST DORSET

Trading for 40 years

Good old-fashioned personal service with
expert knowledge and our own highly skilled
carpet fitters.

Competitive prices, too.
Stockists of hand-made rugs
laminated and wood flooring
vinyl and LVT flooring

52A West Street (next to Waitrose), **Bridport**

Tel: (01308) 427081

www.carpetworld-bridport.co.uk

*If your back goes out more than you do...
call us for help with muscular aches and pains*

Adams & Associates

Twist and Shout Osteopathic Health Centre

32 South Street Bridport DT6 3NQ Tel: 01308 459996/427033

*We continue to provide our services whilst maintaining
all measures to try to keep safe"*



H Leaf & Sons Ltd

BUILDING CONTRACTORS

THE FORGE, POWERSTOCK

OFFICE: 01308 485201 - JODY: 07971 870873
EMAIL: jodyleaf@hotmail.co.uk



JW Coastal Cleans

Weekly Cleans - Holiday Lets
Office Cleans - End of Tenancy
Construction Cleans - Laundry Services

07711 567515
jwcoastalcleans@gmail.com

Brook Brothers

Landscaping and Garden Maintenance

Services Include

Routine Garden Maintenance
Hedge and Small Tree Cutting
Pressure Washing
Paving - Lawn Care
Pergolas - Fencing
Patis



Call Sam - Mobile: 07498 165867
Tel: 01 308 898741

Vicary & Co

Chartered Surveyors & Property Agents

Sales & Lettings

Your Local Independent Agent

**Book your FREE
market appraisal today!**

12a South Street, Bridport - 01308 459550
5 South Street, Axminster - 01297 33449
vicaryandco.com



GHM
GENERAL HOUSE MAINTENANCE

Proprietor:
Christopher Lamble
"Over 20 Years of Proven
experience in the trade"

Call Chris for a free
no-obligation quotation

- **Glass & Glazing**
- **External & Internal
Painting & Decorating**
- **Roof, Kitchen &
Bathroom Tiling**
- **Guttering**
- **General
Carpentry**

Tel: 01308 897095
Mob: 07798 750905

christopherlamble@btinternet.com

GHM

11, Barr Lane, Burton Bradstock
Bridport, Dorset DT6 4PX

MATT ATKINSON TREE SURGEON

All tree and hedge work
undertaken



- ♦ Friendly ♦ Affordable
- ♦ Reliable ♦ Fully Insured
- ♦ NPTC Qualified

tel 01308 868503

mb 07960 060025

mattatkinsontreesurgery.co.uk

DANIEL SHEPPARD

PAINTER & DECORATOR
BESPOKE SPRAYING

ROOF REPAIRS, PROPERTY MAINTENANCE,
HOUSE CLEARANCES, POWER WASHING,
GUTTER CLEANING & GLASS REPLACEMENT

07703 434 216

danielsheppard64@gmail.com



FUNERAL DIRECTORS &
MONUMENTAL MASONS

A. G. DOWN

66 SOUTH ST, BRIDPORT 01308 422643

Pre-arranged & prepaid funeral plans

Offices also at Dorchester, Axminster, Seaton,
Honiton & Ottery St. Mary



Julian Hussey
DipFD NAFD

Karen Hussey
DipFD NAFD

George Hussey
DipFD NAFD

Jasmine Hussey
Cert FAA NAFD



AERIALS & CABLES

TV & RADIO AERIAL
INSTALLATIONS & REPAIRS
"DIGI" UPGRADES
FREEVIEW BOXES INSTALLED

Established 40 years

01297 443928
(ansaphone)

078 144 81833
(mobile)



Jo Shackleton

Picture Framer

Near Littlebredy

Contact:

01308 482645

07842 363445

thedorsetframer@gmail.com

Dorset to Doorstep

Richard Kennelly - 07725 548013

email: dorsettodoorstep@gmail.com

www.dorsettodoorstep.co.uk



Licensed by
Dorset Council

ROSA
CHENEY
SCENTED CUT ROSES

Freshly picked, old fashioned style English roses
grown in our Dorset garden for gifts, weddings
and welcome hampers for holiday homes.

Unique hand tied bouquets, supplied in a stylish gift box, from £10 including delivery

Rose stems to create your own arrangements – £10 for 7 including delivery
in Winter other scented flowers are used e.g. narcissus and hyacinths

Welcome hampers containing local produce and a hand tied bouquet from £40

Free delivery within 30 miles of Bridport, Dorset

Contact me to discuss your requirements or visit the website for more information

www.rosacheney.com | emilycave@rosacheney.com | 01308 482266 / 07787 512386

HELP DORSET COUNCIL RECYCLE

Have all your milk delivered in 1pt glass bottles from Hangers Dairy and save all that plastic waste

(Glass bottles are washed and do approx 30 trips to the door-step, then are recycled back into glass products again. Foil bottle tops can be totally recycled)



your milkman will deliver

Hangers Dairy have been delivering in the Bridport area for over 100 years to a loyal and established customer base and are now running all electric vehicles.

THANK YOU ALL FOR YOUR CUSTOM AND YOUR CONTINUED BUSINESS.



HANGERS DAIRY LTD

North Mills, Trading Estate, Bridport DT6 3BE

T: 01308 423308 • E: info@hangersdairy.co.uk

Benefice Services

May 2025	First Sunday 4 th May 3 rd Sunday of Easter	Thursday 8th May VE DAY 80 years	Second Sunday 11 th May 4 th Sunday of Easter	Third Sunday 18 th May 5 th Sunday of Easter	Fourth Sunday 25 th May 6 th Sunday of Easter and Rogation Sunday	Ascension Day 29 th May
Burton Brackstock	11.00am Morning Worship	11.00am VE Day 80 Commemoration with School	11.00am Holy Communion	9.30am Café Church	8.00am Holy Communion 9.30am Breakfast Church	
Chilcombe			5.30pm Evening Prayer			
Linton Cheney	9.30am Holy Communion	9.15am VE Day 80 Commemoration with school	9.30am Morning Worship	6.00pm Evensong	9.30am Morning Worship	
Punchknole	Morning Praise 11.00am and Flower Festival		9.30am Holy Communion		11.00am Café Church	
Swyre	6.00pm Evening Prayer			11.00am Holy Communion		
Shipton Gorge			9.30am Breakfast Church	2.00pm Bell Sunday service	11.00am Holy Communion	
Long Bredy	11.00am Holy Communion			9.30am Morning Worship		
Littlebredy			11.00am Morning Worship		11.00am Holy Communion	11.00am - outdoor service
Portisham		VE day 80 Act of Remembrance - time tbc	10.00am Family Praise	11.00am Holy Communion	9.00am BCP Holy Communion	
Abbotsbury	11.00am Holy Communion	VE Day Services 2pm			10.00am Family Praise	
Langton Herring	9.00am BCP		11.00am Holy Communion	10.00am Family Praise		
Cotton					Rogation service 3.00pm	
Mid Week Holy Communion: 11.30am Burton Brackstock 7 th May						

